

CAT. No.
57011

IEC320 / CEE22 POWER INLET, SCREW MOUNT TO PANELS, BLACK, 2 POLE 3 WIRE, 6.3mm (1/4) TABS
STANDARD:IEC320

10A 250V

APPROVALS / CERT'S.

DEMKO

FI

IMQ

KEMA

NEMKO

OVE

SEMKO

SEV

VDE

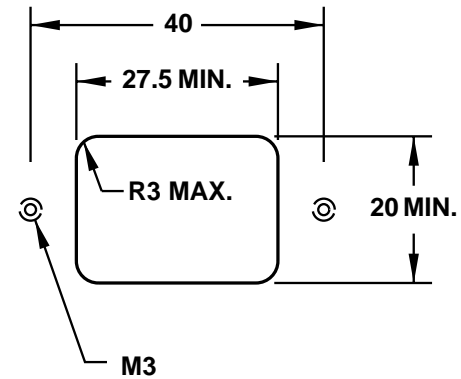
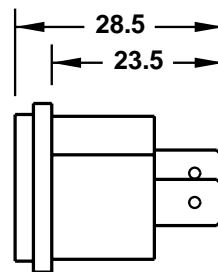
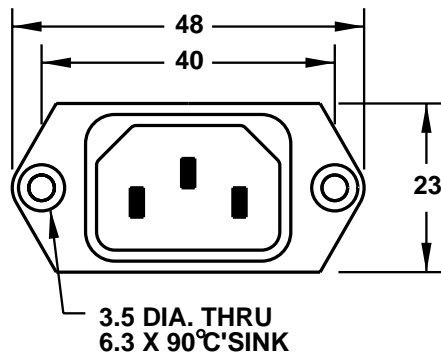
15A 250V

APPROVALS / CERT'S.

CSA

UL

ALL DIMENSIONS ARE IN MILLIMETERS



MOUNTING HOLE