

CAT. No.  
**57090-RA**

IEC 60320 C-19 CONNECTOR, RIGHTANGLE CORD GRIP, BLACK, 2 POLE 3 WIRE,  
16 AMP 250 VOLT (VDE, SEMKO) 20 AMP 250 VOLT (UL/CSA)  
STANDARD: IEC60320 C-19

16A 250V

APPROVALS / CERT'S.

SEV

VDE

20A 250V

APPROVALS / CERT'S.

CSA

UL

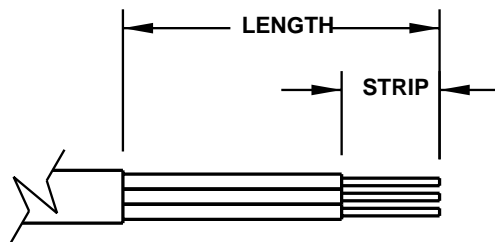
CE

## ALL DIMENSIONS ARE IN MILLIMETERS

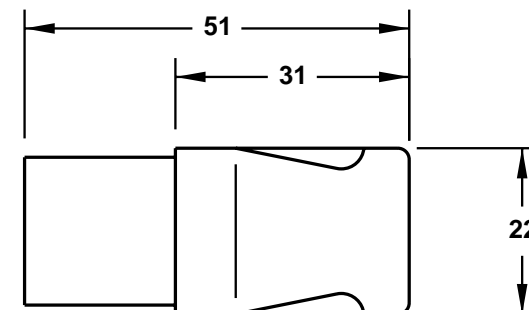
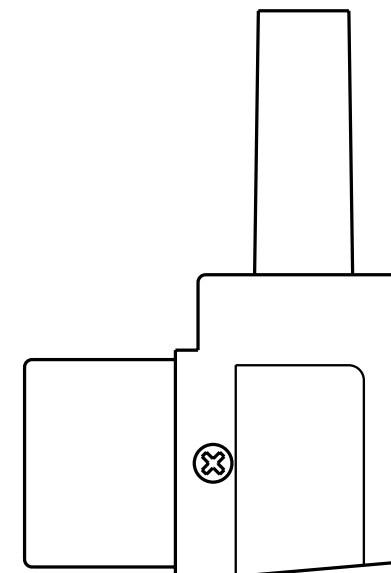
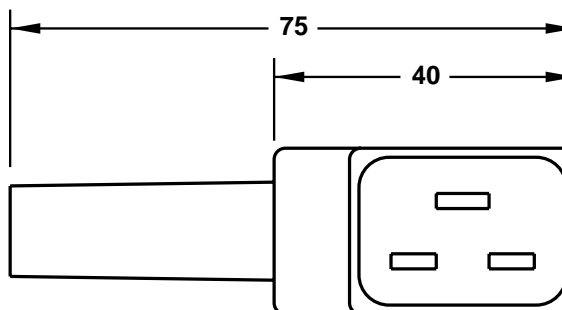
MAXIMUM JACKET O.D. ACCEPTED BY EXTERNAL STRAIN RELIEF = 9 DIA (0.354")  
MAXIMUM JACKET O.D. ACCEPTED BY INTERNAL STRAIN RELIEF = 10 DIA (0.394")  
MAXIMUM CONDUCTOR SIZE ACCEPTED BY TERMINALS = 4.0 (12 AWG)

### CORDAGE PREPARATION

CONDUCTOR INSULATION COLOR	CONDUCTOR COLOR CODE	"LENGTH"	"STRIP"
GREEN / YELLOW	GROUND	30	6
BLUE	NEUTRAL	20	6
BROWN	LINE	45	6



CORDAGE PREPARATION



www.InternationalConfig.com  
sales@internationalconfig.com