

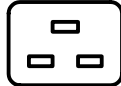
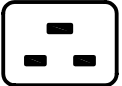
CAT. No.

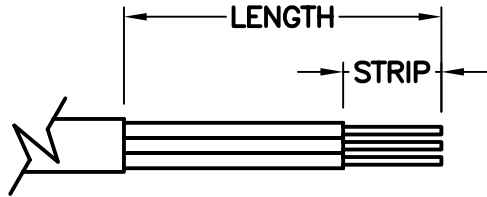
**57110-RA**

IEC 60320 C-20 PLUG, RIGHT ANGLE CORD GRIP, BLACK, 2 POLE 3 WIRE, 16A 250 VOLT (VDE, SEV),  
20A 250 VOLT (UL/CSA).

16A 250V	APPROVALS	SEV <input checked="" type="checkbox"/>	VDE <input checked="" type="checkbox"/>
20A 250V	APPROVALS	CSA <input checked="" type="checkbox"/>	UL <input checked="" type="checkbox"/>
	CERTIFICATIONS	CE <input checked="" type="checkbox"/>	ROHS <input checked="" type="checkbox"/>
	STANDARDS	IEC 60320 C-20	

**CONFIGURATIONS**

RECEPTACLE	PLUG	20 AMPERE 250 VOLT UL/CSA 16 AMPERE 250 VOLT INTERNATIONAL
		
IEC 60320 C-19	IEC 60320 C-20	

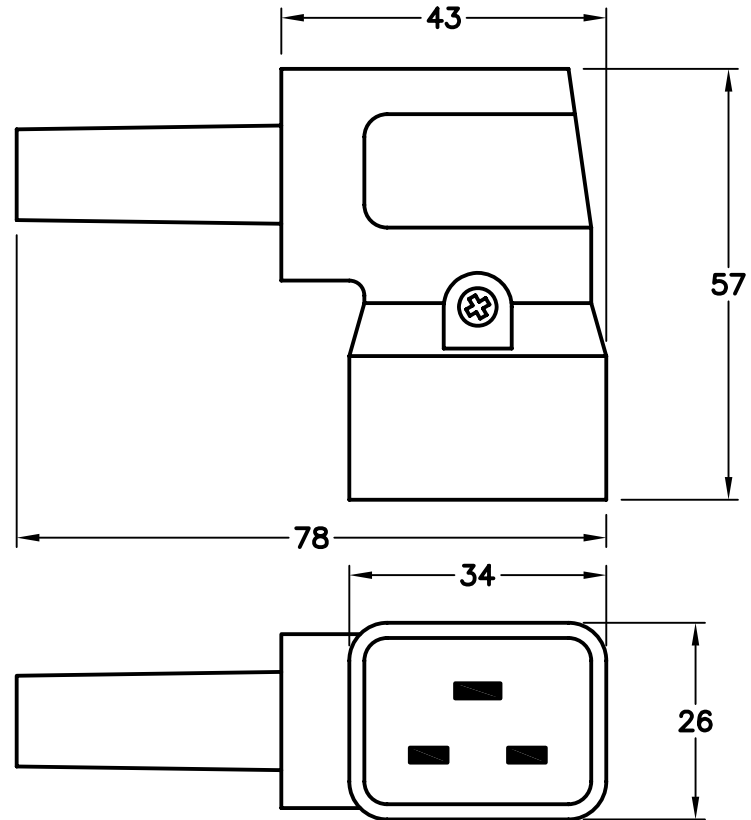
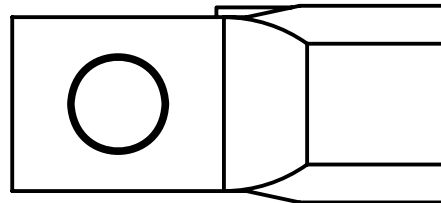


CORDAGE PREPARATION

MAXIMUM JACKET O.D. ACCEPTED BY EXTERNAL STRAIN RELIEF = 10 DIA (0.394")  
 MAXIMUM JACKET O.D. ACCEPTED BY INTERNAL STRAIN RELIEF = 10 DIA (0.394")  
 MAXIMUM CONDUCTOR SIZE ACCEPTED BY TERMINALS = 4.0 (12 AWG)

**CORDAGE PREPARATION**

CONDUCTOR INSULATION COLOR	CONDUCTOR COLOR CODE	"LENGTH"	"STRIP"
GREEN/YELLOW	GROUND	30	6
BLUE	NEUTRAL	40	6
BROWN	LINE	12	6



ALL DIMENSIONS ARE IN MILLIMETERS