

CAT. No.
57540

IEC 320 / C-14 POWER INLET, DOUBLE POLE FUSEHOLDER, SNAP-IN MOUNT TO 1.5 mm THICK PANELS, BLACK,
FUSE DRAWER, 4.8 mm (3/16") QC TABS, 10 AMP 250 VOLT
STANDARD:IEC320

APPROVALS / CERT'S.

CSA

SEMKO

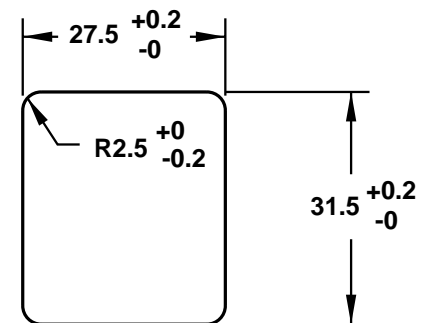
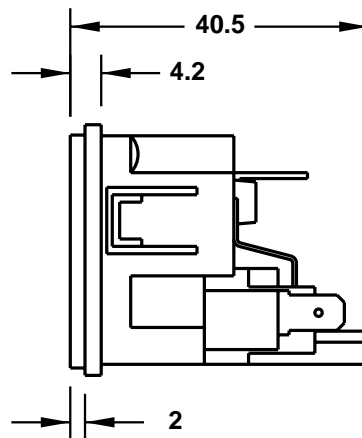
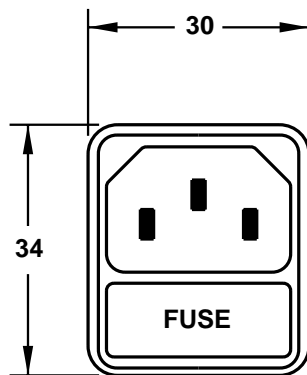
SEV

UL

VDE

ALL DIMENSIONS ARE IN MILLIMETERS

NOTE: FUSE DRAWER MUST BE ORDERED SEPARATELY



MOUNTING HOLE