

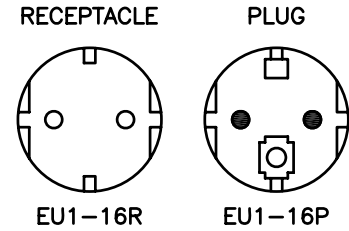
CAT. No.

70170

EUROPEAN "SCHUKO" CONNECTOR, RUBBER, BLACK, 2 POLE 3 WIRE, 16 AMPERE 250 VOLT, (EU1-16R)

APPROVALS	CEBEC <input checked="" type="checkbox"/>	KEMA <input checked="" type="checkbox"/>	OVE <input checked="" type="checkbox"/>	SEMKO <input checked="" type="checkbox"/>	VDE <input checked="" type="checkbox"/>
STANDARDS	CEE 7/7 <input checked="" type="checkbox"/>	DIN 49440 <input checked="" type="checkbox"/>			
CERTIFICATIONS	ROHS <input checked="" type="checkbox"/>				

CONFIGURATIONS



16 AMPERE 250 VOLT EUROPEAN "SCHUKO" Receptacle and plug. Non-Polarized. 4.8 mm pins. Receptacle CEE 7-7. Plug CEE 7-7.

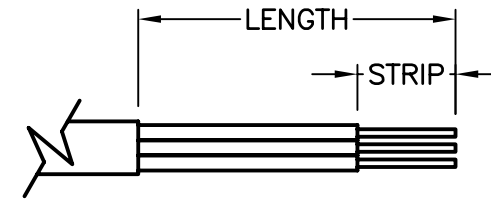
NOTE:

- "SCHUKO" PLUGS AND RECEPTACLES ARE NON-POLARIZED.
- EQUIPMENT GROUND TERMINAL IS IDENTIFIED WITH \perp SYMBOL.

MAXIMUM JACKET O.D. ACCEPTED BY EXTERNAL STRAIN RELIEF = 13 DIA (0.512")
 MAXIMUM JACKET O.D. ACCEPTED BY INTERNAL STRAIN RELIEF = 13 DIA (0.512")
 MAXIMUM CONDUCTOR SIZE ACCEPTED BY TERMINALS = 4.0 (12 AWG)

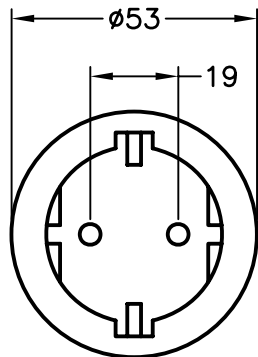
CORDAGE PREPARATION

CONDUCTOR INSULATION COLOR	CONDUCTOR COLOR CODE	"LENGTH"	"STRIP"
GREEN/YELLOW	GROUND	35	10
BLUE	NEUTRAL	35	10
BROWN	LINE	35	10



CORDAGE PREPARATION

ALL DIMENSIONS ARE IN MILLIMETERS



EU1-16R
CEE-7 DIN 49440

