

CAT. No.
72140-RCD-A

UNITED KINGDOM RCD (GFCI) ANGLE PLUG (PASSIVE, LATCHING, AUTOMATIC RESET AFTER POWER FAILURE), IP2X, (UK1-13P), 13A FUSE, 2P-3W, 13A-230/250V, 50 Hz, 3120 WATTS, 30 mA TRIP LEVEL, TRIP SPEED 40ms, DOUBLE POLE, TEST/RESET BUTTON, POWER ON/OFF INDICATOR, OPERATING TEMP. -5 TO 40 C, CE MARK.

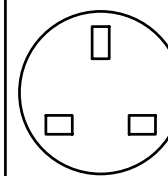
CERTIFICATIONS CE
STANDARDS BS 1363 BS 7071

**REQUIRES "RESET"
AFTER POWER FAILURE**

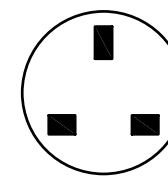
CONFIGURATIONS

RECEPTACLE

PLUG



UK1-13R



UK1-13P

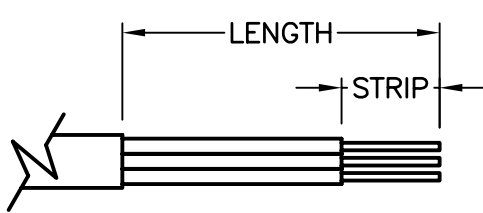
13 AMPERE 250 VOLT
United Kingdom
Receptacle and fused plug.
Polarized.
(BS 1363A)

MAXIMUM JACKET O.D. ACCEPTED BY EXTERNAL STRAIN RELIEF = 10 DIA (0.394")
MAXIMUM JACKET O.D. ACCEPTED BY INTERNAL STRAIN RELIEF = 10 DIA (0.394")
MAXIMUM CONDUCTOR SIZE ACCEPTED BY TERMINALS = 2.5 (14 AWG)

CORDAGE PREPARATION

CONDUCTOR INSULATION COLOR	CONDUCTOR COLOR CODE	"LENGTH"	"STRIP"
GREEN/YELLOW	GROUND	23	7
BLUE	NEUTRAL	23	7
BROWN	LINE	23	7

ALL DIMENSIONS ARE IN MILLIMETERS



CORDAGE PREPARATION

