

CAT. No.

**888-410306**

IEC 309 CEE 17 OUTLET, PANEL MOUNT, BLUE, 20 AMPERE 250 VOLT (UL/CSA);  
16 AMPERE 220 / 240 VOLT (EUROPEAN); 50 / 60 HERTZ , 2 POLE + EARTH  
STANDARDS: IEC 309-1, IEC 304-2, BS 4343, DIN 49462/63, VDE 0623, CEE 17, EN 60309

APPROVALS / CERT'S.

CSA

DEMKO

IMQ

OVE

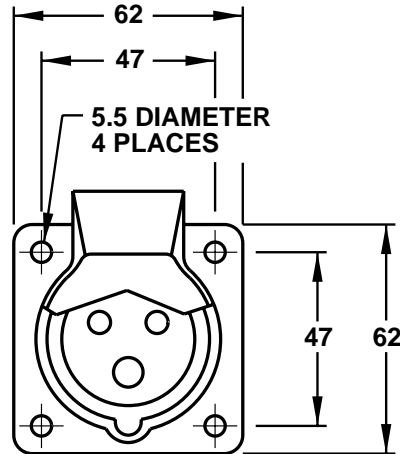
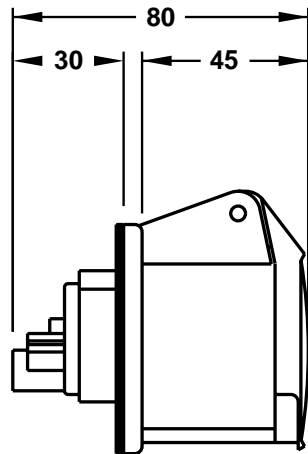
SEMKO

SEV

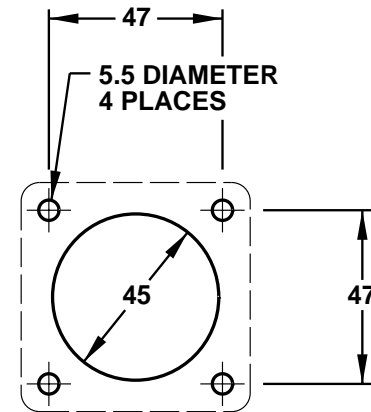
UL

VDE

**ALL DIMENSIONS ARE IN MILLIMETERS**



**NOTE: FOR CLARITY THIS VIEW IS SHOWN WITH LIFT LID BROKEN**



**PANEL CUTOUT**