

CAT. No.
888-6236

IEC 309 CEE 17 INLET, STRAIGHT, PANEL MOUNT TYPE, BLUE, 30 AMPERE 250 VOLT (UL / CSA),
32 AMPERE 220/240 VOLT (EUROPEAN), 50/60HZ , 2 POLE + EARTH
STANDARDS: IEC 309-1, IEC 304-2, BS 4343, DIN 49462/63, VDE 0623, CEE 17, EN 60309

APPROVALS / CERT'S.

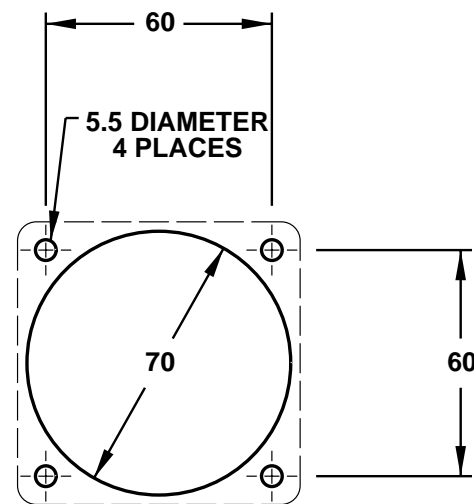
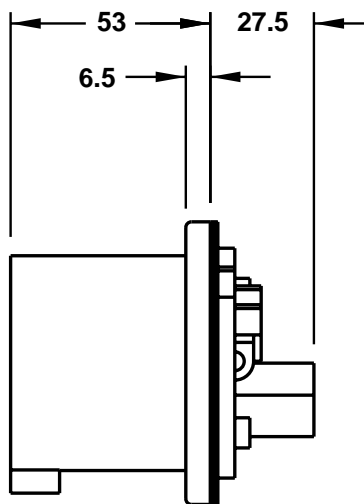
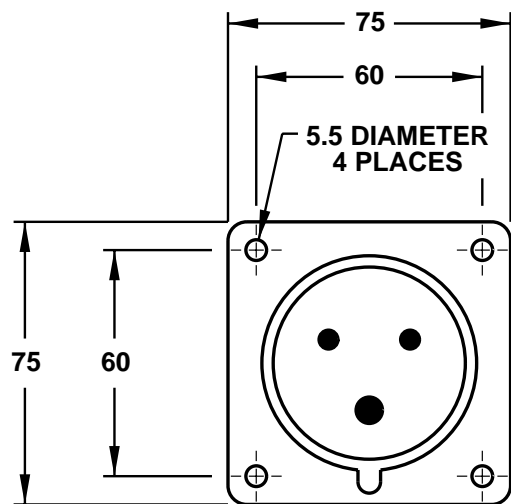
CE MARK

CSA

SEMKO

UL

ALL DIMENSIONS ARE IN MILLIMETERS



PANEL CUTOUT